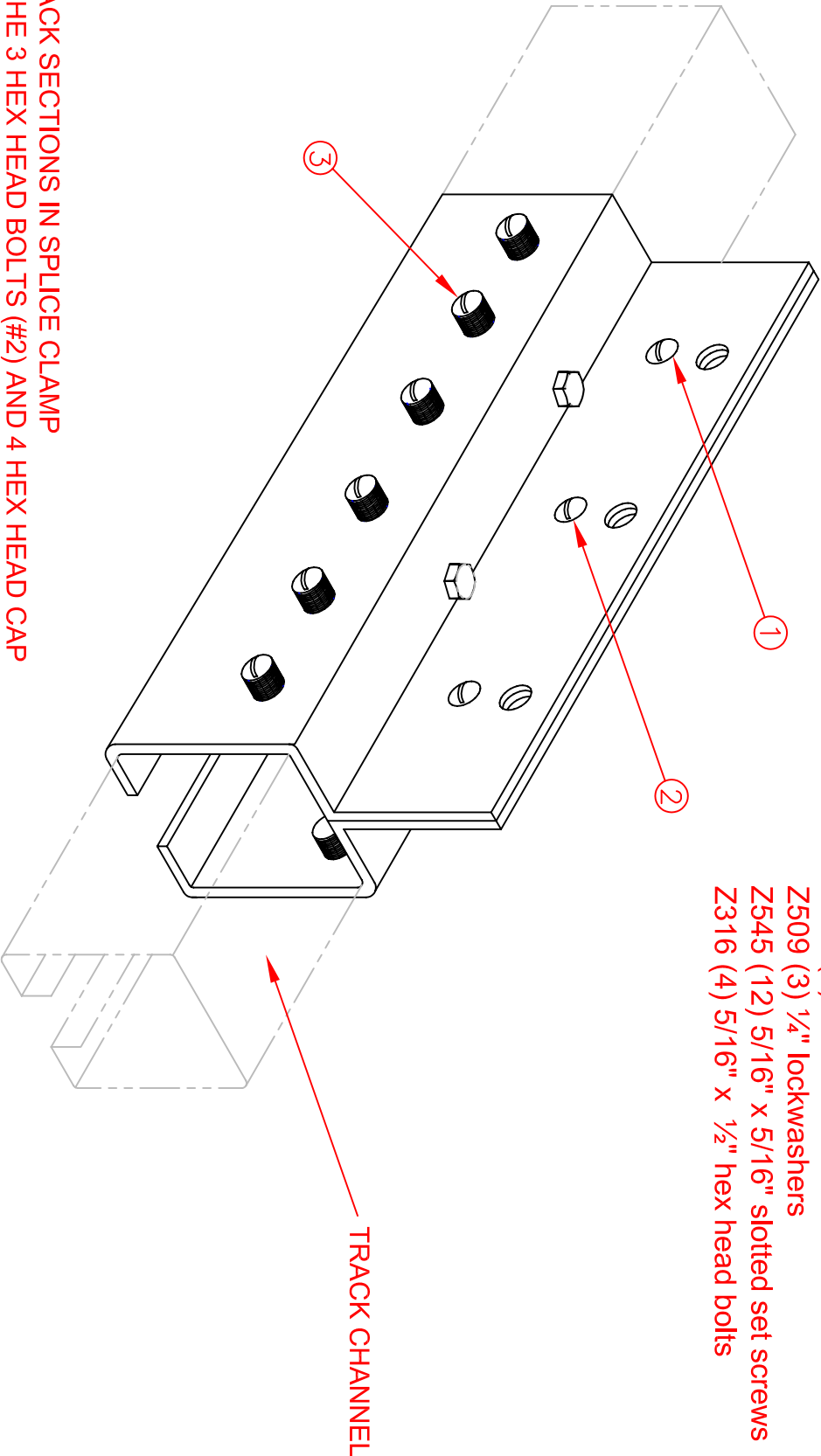


HARDWARE REQUIRED:

- Z029 (3) 1/4"-20 x 3/4" hex head bolts
- Z205 (3) 1/4"-20 nuts
- Z509 (3) 1/4" lockwashers
- Z545 (12) 5/16" x 5/16" slotted set screws
- Z316 (4) 5/16" x 1/2" hex head bolts



1. PLACE TRACK SECTIONS IN SPLICE CLAMP
2. TIGHTEN THE 3 HEX HEAD BOLTS (#2) AND 4 HEX HEAD CAP SCREWS (#1) TO ALIGN TRACKS VERTICALLY IN CLAMP.
3. USE THE 12 SET SCREWS TO PROPERLY ALIGN TRACK SECTIONS HORIZONTALLY IN THE CLAMP.

DO NOT OVERTIGHTEN SCREWS

AUTOMATIC DEVICES COMPANY 2121 S. 12TH ST. ALLENTOWN, PA 18103			
THIS DRAWING HAS BEEN PREPARED AS A SERVICE TO OUR CUSTOMER AND IS INTENDED ONLY TO BE SUGGESTIVE IN NATURE AND IS NOT TO BE USED AS AN ACTUAL INSTALLATION DRAWING. PREVAILING JOB CONDITIONS AND ACCEPTED PRACTICES MUST BE TAKEN INTO ACCOUNT WHEN THE EQUIPMENT IS INSTALLED.			
SIZE	DATE	FORM	REV
A	07/16/10	417	
DRAWN BY	APPROVED BY	DESCRIPTION	
DJL		1724 & 2824 SPLICE CLAMP	
SCALE	NONE	SHEET	DWG NO.
		1 OF 1	A2824-1724-10