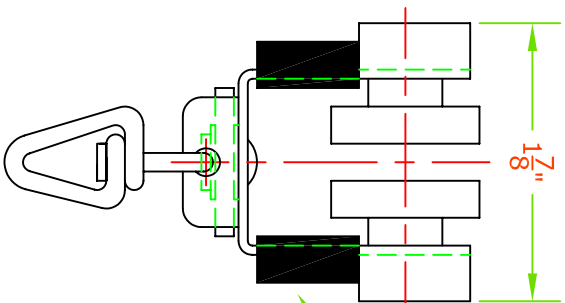
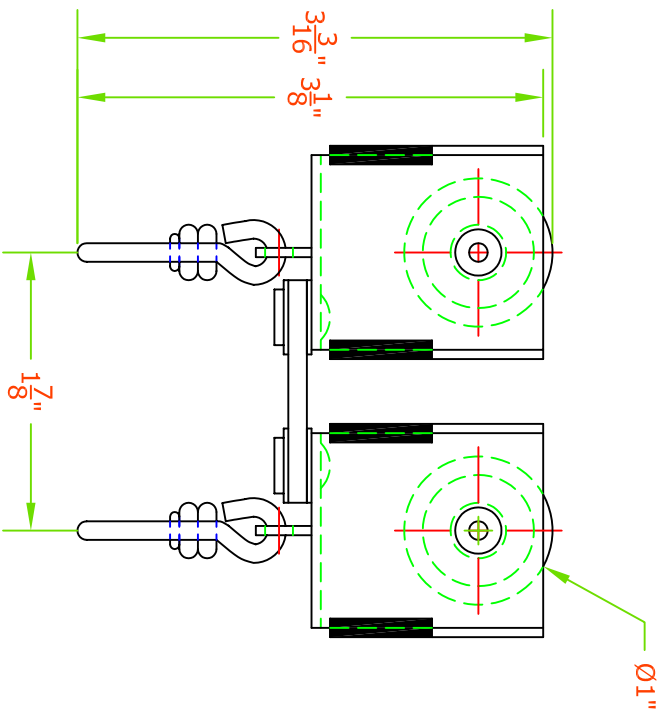


PLATED STEEL BODY
SOLID NYLON WHEELS

NICKEL PLATED STEEL RIVETS AND SWIVELS.

WALK-ALONG OPERATION ONLY.

MUST USE BUMPER/SEPERATORS FOR PROPER OPERATION.



← BUMPER/SEPERATOR

AUTOMATIC DEVICES COMPANY
2121 S. 12TH ST. ALLENTOWN, PA 18103

THIS DRAWING HAS BEEN PREPARED AS A SERVICE TO OUR CUSTOMER AND IS INTENDED ONLY TO BE SUGGESTIVE IN NATURE AND IS NOT TO BE USED AS AN ACTUAL INSTALLATION DRAWING. PREVAILING JOB CONDITIONS AND ACCEPTED PRACTICES MUST BE TAKEN INTO ACCOUNT WHEN THE EQUIPMENT IS INSTALLED.

SIZE	DATE	MODEL	REV
A	09/13/10	420 TRIP-L-TRAC	
DRAWN BY DUL		DESCRIPTION 4253 MASTER CARRIER	
APPROVED BY		SOLID NYLON WHEELS	
SCALE 3/4:1 = SHEET 1 OF 1		DWG NO. A-4253-10	